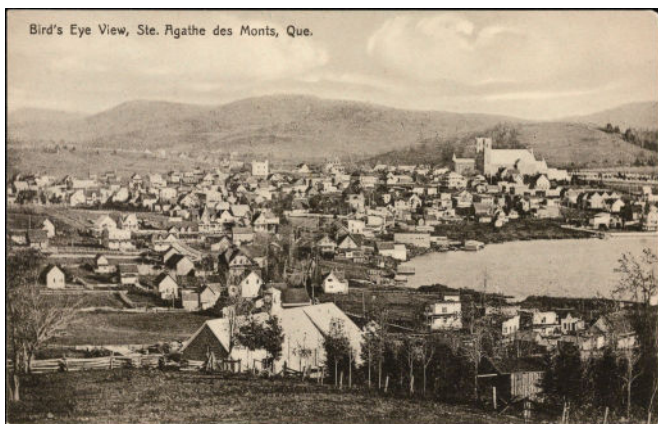
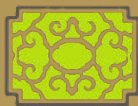


# HISTORICAL RALLY STONEHAVEN LE MANOIR



2hours +/-

SAINTE-AGATHE  
DES-MONTS



IN THE HEART OF  
THE LAURENTIANS



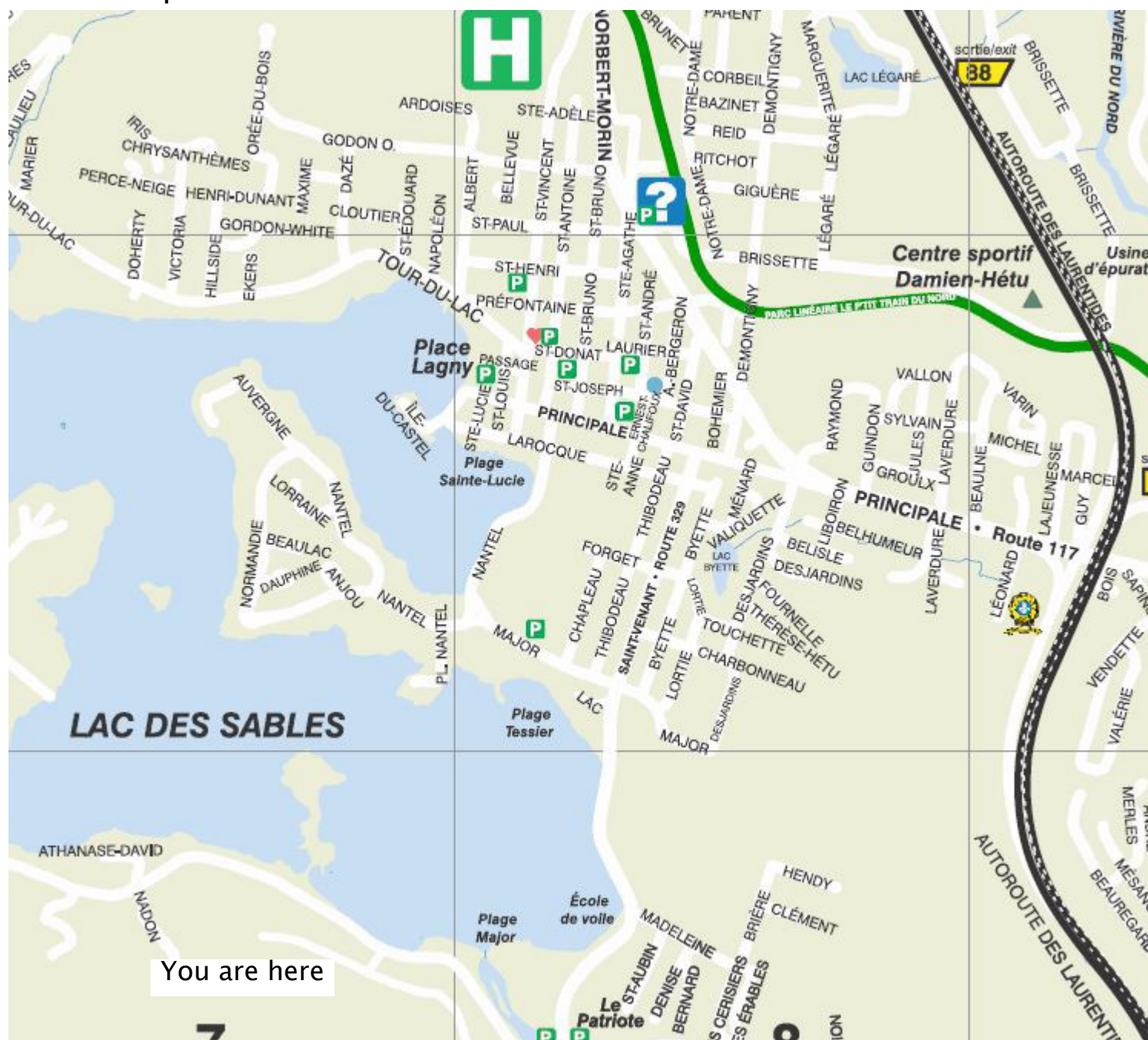
<https://www.stonehavenlemanoir.com/en/>  
<https://ville.sainte-agathe-des-monts.qc.ca/visiteurs/bureau-daccueil-touristique/>

819-774-1991

Walk the streets of downtown Sainte-Agathe-des-Monts with our Historical Rally. You will be immersed in a world resulting from the tourist development of the beginning of the 20th century. From the architectural village to the local merchants, you will discover a part of our Pays-d'en-Haut while having fun with family and friends!

If you experience it as a team, spice it up and find the answers in record time!  
Don't forget your pencil and your sense of observation!  
Ready for the adventure?!

Lieu de départ: StoneHaven Le Manoir



<https://www.stonehavenlemanoir.com/en/>

<https://ville.sainte-agathe-des-monts.qc.ca/visiteurs/bureau-daccueil-touristique/>

819-774-1991

To start your tour of the city, when you leave the parking, turn right and go up the street to the Ste-Agathe-des-Monts campground.

#### History

Created in 196, in the wake of the major work infrastructure accomodation related to the holding of the Worl Fair, the campground offers several sports activities throughout the year.



**Question 1.** What natural material is the main building made of?

Answer:

Continue your journey along the same path and meet the theater which was originally called the Théâtre de la sablière.

#### History

Established in the former stable of Mr. Lornes Douglas McGibbons in the 1920s, the theater became a mythical place in the Quebec cultural life that saw the greatest Quebecois artists.



**Question 2.** What is the name of the theater and since when has it been a theater?

Answer:

Turn back and join the rue Saint-Venant. By turning right you will go along the famous Lac-des-Sables.

#### History

At the edge of the beach, you will notice a small blue and white shack that offers courses and rental of nautical equipment.



**Question 3.** What water sport can you learn at this location?

Answer:

Continue on the same street. At the end turn right on the main street. Go to the roundabout and head towards Norbert–Robin Boulevard #117.

Do you know the history of the P'tit Train du Nord? Located at 24 St. Paul Street East, the site is full of history and offers you a 224 km long trail: it is the longest linear park in Canada offers pedestrian activities all year long.



**Question 4.** When you arrive at the site, you will see an information kiosk, what this was used for before the creation of the P'tit Train du Nord?

Answer:

Continue on Norbert–Robin Boulevard #117. After a few meters, turn left on Godon street East and join Saint–Vincent street to head towards the hospital.

#### History

At the end of the 19th century, tuberculosis was a plague and there was no cure other than rest and clean, fresh air. In the early 1900s, Lornes Douglas McGibbons joined forces with other investors and founded the Laurentian Sanatorium, which opened in 1911.

**Question 5.** What is the name of the pavilion that used to be the Laurentian Sanatorium?

Answer:

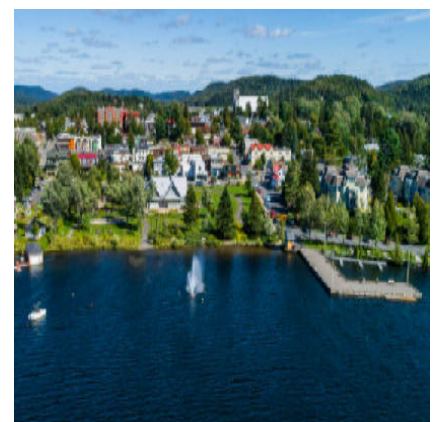


Turn back and turn right on Godon street west to the intrersection with Albert street to reach the waterfront. At the end, turn left on chemin du Tour du Lac.

Here you are in the heart of the city with a magnificent view of the lake and its main pier. This place owes its name to the international twinning of the municipality in 1969 with the French commune of Lagny-sur-Marne.

**Question 6.** What is the name of this place located at the edge of Lac-des-Sables?

Answer:



The rally is almost over! Venture onto the Main Street and turn left onto St-Vincent street. Continue to the next intersection.  
At the intersection, on your right, you can see a large building.

#### History

This magnificent 1912 Beaux-Arts style heritage building was named in honor of the great Quebecois poet born in Ste-Agathe-des-Monts.

**Question 7.** Which building is it and what is the name of the great Agathois poet?

Answer:



Turn onto St-Donat Street. After the three stops, turn right. You are now on your way to the church.

#### History

More than 160 years old, the architects Guathier and Daoust of Montreal were inspired by the archdiocese of Paris to design it. Its large arched windows and bell towers are reminiscent of the «Neo-Romanesque» architectural style.

**Question 8.** How many entrance doors and bell towers are at the front of the church?

Answer:

**Congratulations!**

The city of Sainte-Agathe-des-Monts has no more secrets for you!  
Enjoy the beautiful view of the lake and its nature.

Discover our many local restaurants, bakeries and pastry shops.  
Head back to the Manoir when you are ready!

We look forward to seeing you and hearing your comments  
on the Manoir Rally!

- Return to the Manoir on rue Principale:
- Head south toward rue Principale East
  - Turn right at rue Saint-Venant/QC-329 South
    - Continue straight for 1.8 km
  - Turn right on Chemin du Lac-des-Sbles
  - Continue for 1.4 km and the destination will be on your left